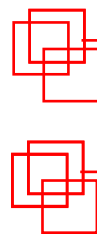




*EMR'22*

*Sion*

*June 2022*



**EMR'22 Summer School**  
**"Energetic Macroscopic Representation"**



# « Introduction of EMR'22 Summer school »

**Prof. Philippe BARRADE, Prof. Alain BOUSCAYROL**  
HES-SO, Switzerland  
L2EP, University of Lille, France



1

**HES-SO**

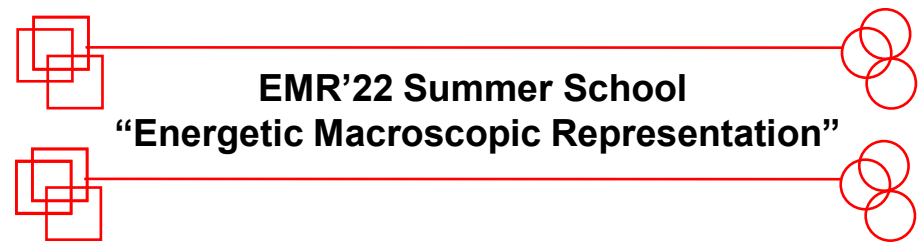
2

**EMR summer schools**

3

**EMR'22 organization**

*EMR'22*  
*Sion*  
*June 2022*



# « University of Lille & L2EP »

**Prof. Betty LEMAIRE-SEMAIL,**  
(Univ. Lille, L2EP)



### at the crossroad of Paris, London and Brussels

Lille and suburbs more than 1.5 million inhabitants

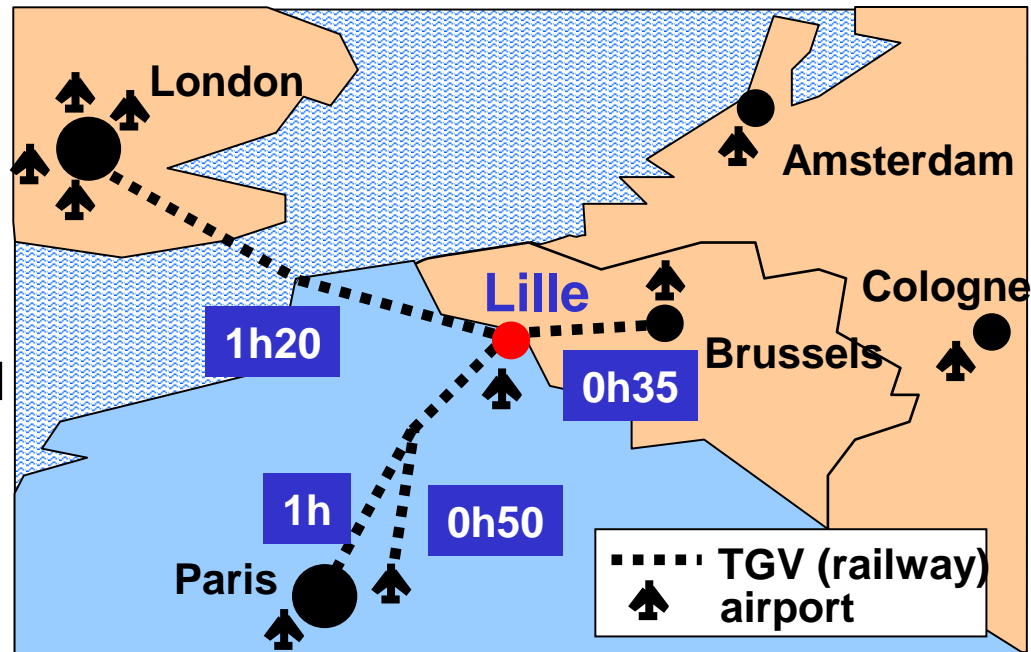


University of Lille

72,000 students, 12% from abroad

66 research labs

<https://www.univ-lille.fr/home/>



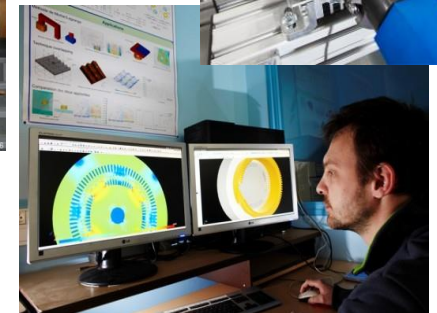
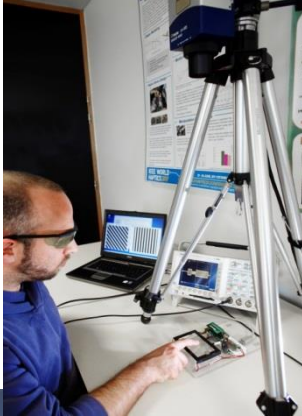
# Introduction of EMR'22

- L2EP Lille -

5

EMR'22, Sion, June 2022

<http://l2ep.univ-lille.fr/>



More than 100 members : 37 professors and associate professors, 40 PhD students, 15 lab's staff, Post-doctoral positions, Master students, etc.



# Introduction of EMR'22

## - Research at L2EP -

EMR'22, Sion, June 2022

6



Prof. Betty LEMAIRE-SEMAIL



**Control**

**Power electronics**

**Numerical tools & methods**

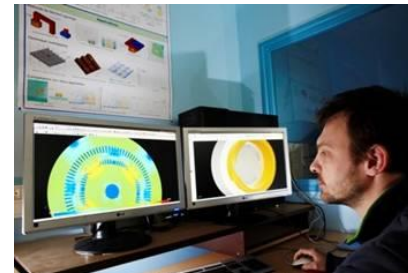
**Power grids**

Prof. Alain BOUSCAYROL

Prof. Philippe LE MOIGNE

Prof. Abdelmounaim TOUNZI

Prof. Benoit ROBYNS



### Objective

Control for innovative  
and efficient  
« electrical systems »

**Piezoelectric  
actuators  
(F. Giraud)**

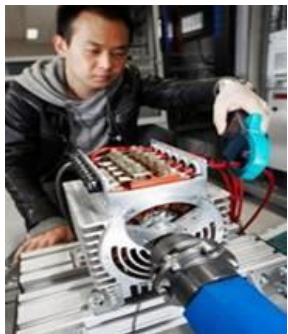


**April 2021**

- 3 Professors
- 5 Associate Prof.
- 4 Engineers
- 1 Technician
- 5 Post-Doc
- 14 PhD students
- 4 Master students

**Formalisms  
for control**

**Multiphase  
drives  
(E. Semail)**



**Electrified  
vehicles  
(A. Bouscayrol)**



**electricity & Vehicles  
Platform (W. Lhomme)**



*EMR'22*

*Sion*

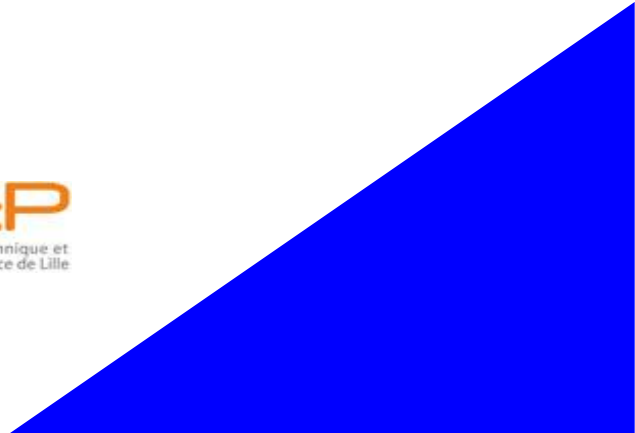
*June 2022*



**EMR'22 Summer School**  
**"Energetic Macroscopic Representation"**

# **Energetic Macroscopic Representation (EMR) and summer schools**

**Prof. Alain BOUSCAYROL,**  
(Univ. Lille, L2EP)





# Introduction of EMR'22

## - Research at L2EP Univ. Lille -

EMR'22, Sion, June 2022

9



Prof. Betty LEMAIRE-SEMAIL



**Control**

Prof. Alain BOUSCAYROL



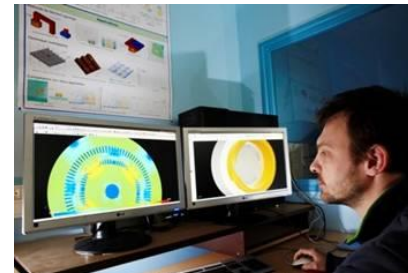
**Power electronics**

Prof. Philippe LE MOIGNE



**Numerical tools & methods**

Prof. Abdelmounaim TOUNZI



**Power grids**

Prof. Benoit ROBYNS

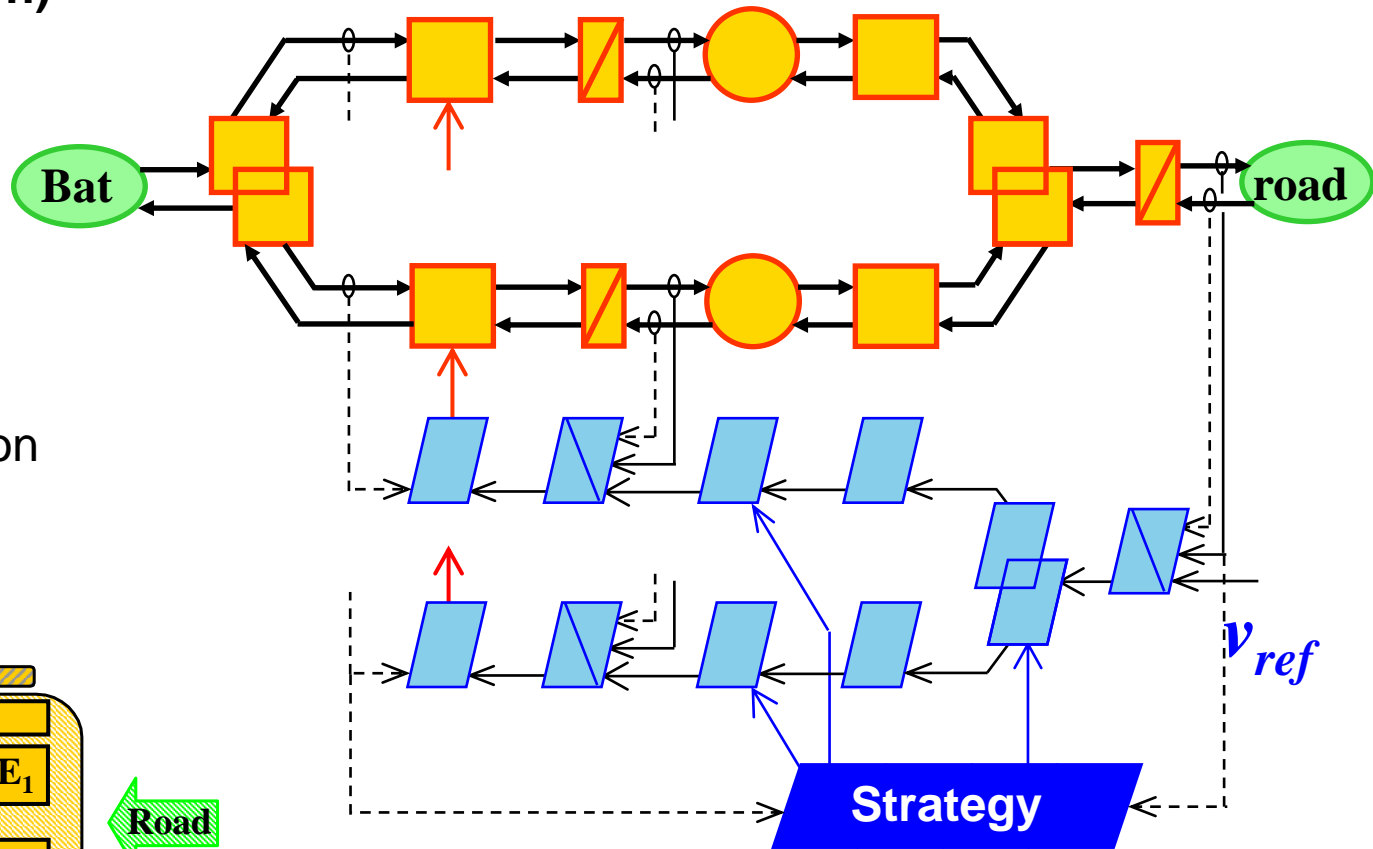
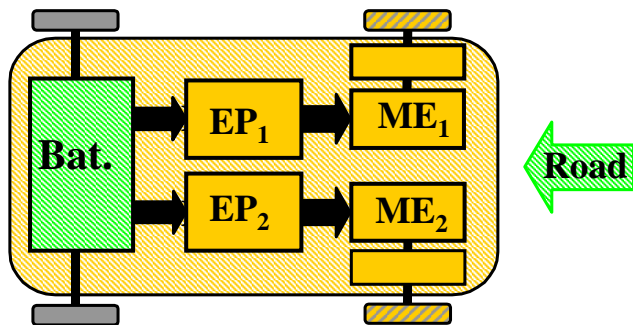


### EMR (graphical description)

=  
organization  
of models of  
complex systems



Systematic deduction  
of organization of  
control schemes



### University of Lille, Polytech Lille, EC Lille

Master 1: EMR initiation

Master 2: EMR further development

### Other French Universities and Engineering Schools

Cachan (2004) Belfort (2006), ParisTech (2010),  
Compiègne (2012), Polytech Paris Sud (2014), etc.

### Universities abroad France

Univ. Trois-Rivières, Canada (2002)

EPF Lausanne, Switzerland (2005)

Harbin Institute of Technology, China(2008)

Univ. Tsinghua, Beijing, China(2008)

UPC, Barcelona, Spain (2010)

Univ. Graz, Austria (2012)

INES Coimbra, Portugal (2014)

Univ. Ap. Sc. Sion, Switzerland (2015)

Univ. Sherbrooke, Canada (2015)

Univ. Oviedo, Spain (2016)

Univ. Santander, Colombia (2017)

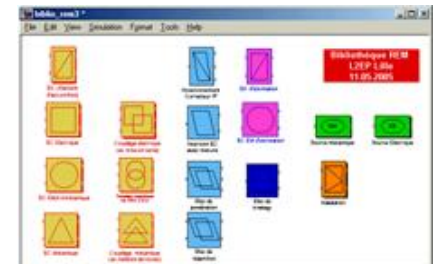
Univ. Hanoi, Vietnam (2018) etc.



*Simulation session, EMR'08, Harbin*



*Lecture session, EMR'12, Madrid*



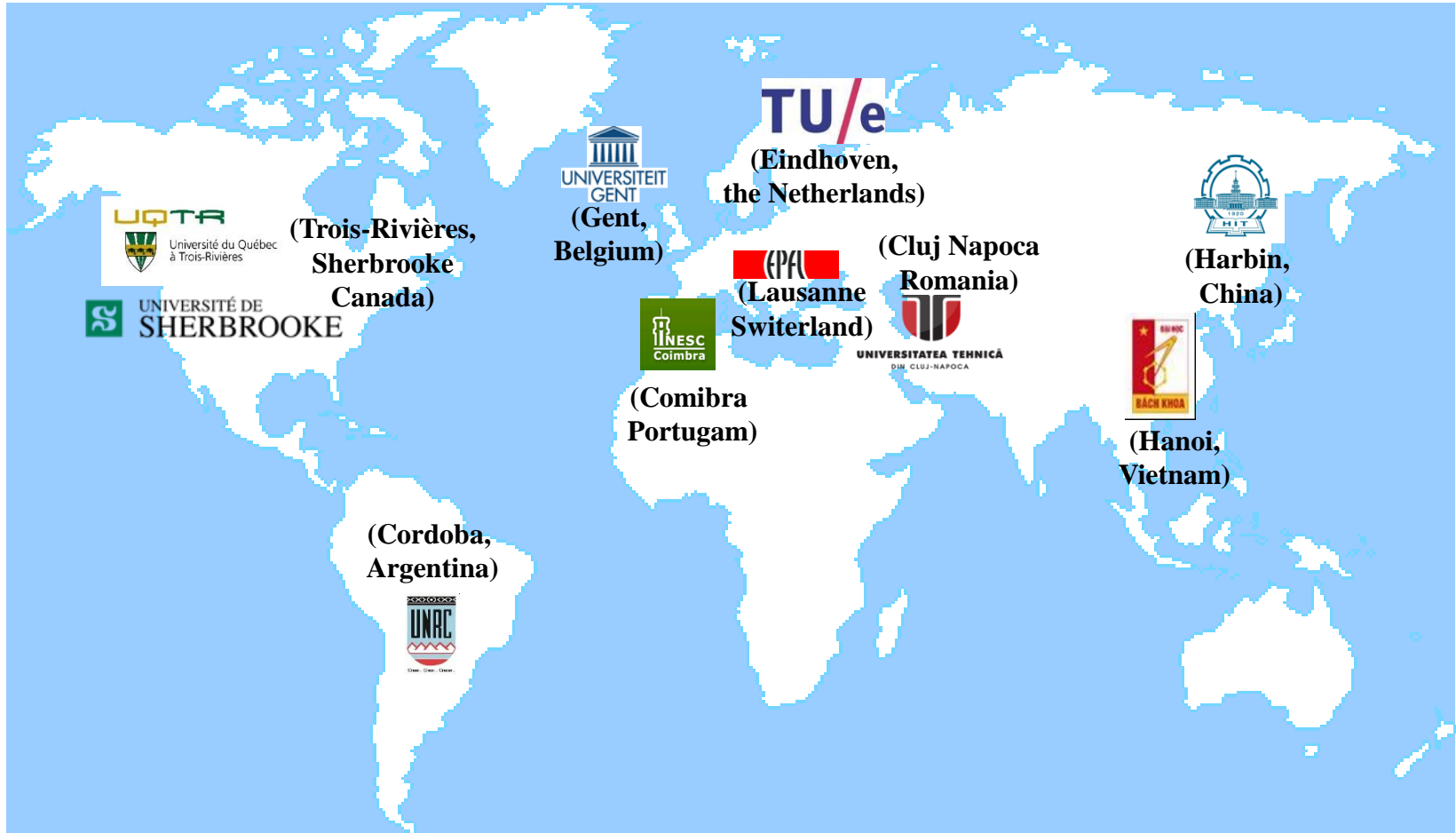
*EMR Simulink library*

# Introduction of EMR'22

## - EMR & collaboration -

EMR'22, Sion, June 2022

12



### Industry:



# Introduction of EMR'22

## - EMR Summer Schools -

EMR'22, Sion, June 2022

Starting 2006, since 2011 annual, since 2013 odd years in Lille, even years abroad



EMR'09,  
Trois-Rivières

EMR'16, Montréal

EMR'06, EMR'13, EMR'15, EMR'17, EMR'19, EMR'21 Lille

EMR'14, Coimbra

EMR'12, Madrid

EMR'11, Lausanne

EMR'18, Hanoi

EMR'08, Harbin

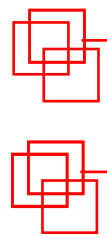




*EMR'22*

*Sion*

*June 2022*

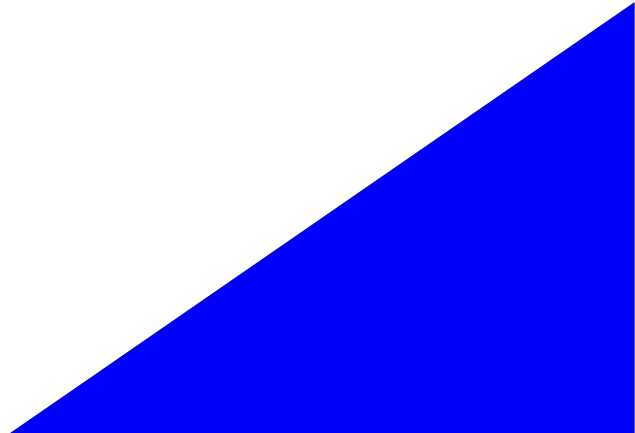


**EMR'22 Summer School**  
**“Energetic Macroscopic Representation”**



# « EMR'22 Summer School »

**Prof. Philippe BARRADE,**  
(HES-SO)



# Introduction of EMR'22

## - Hybrid Organization -

EMR'22, Sion, June 2022

15

concept lectures

application lectures

simulation

Montreal UCT-4	Paris UTC+2	Hanoi UTC+7		Monday 14	Tuesday 15	Wednesday 16	Thursday 17
	9:00	14:00			Simulation part 1	Simulation part 2	Simulation part 3
	9:30	14:30					
	10:00	15:00					
	10:30	15:30				Matlab or AMESIM	
	11:00	16:00					
	11:30	16:30					
	12:00	17:00					
	12:30	17:30					
	13:00	18:00					
	13:30	18:30					
	8:00	14:00	19:00	intro	Application 1	Application xx	Application xx
	8:30	14:30	19:30	Systemics	Application 2	Application xx	Application xx
	9:00	15:00	20:00	EMR	Application xx	Application xx	Application xx
	9:30	15:30	20:30		Application xx	Application xx	Application xx
	10:00	16:00	21:00	Inversion control	Application xx	Application xx	Application xx
	10:30	16:30	21:30	EV example	Application xx	Application xx	Application xx
	11:00	17:00	22:00	RES example	Application xx	Application xx	Application 23
	11:30	17:30	22:30	SW & HW	Application xx	Application xx	Application 24
	12:00	18:00					
	12:30	18:30					
	13:00	19:00			Simulation part 1	Simulation part 2	Simulation part 3
	13:30	19:30					
	14:00	20:00					
	14:30	20:30				Matlab only	
	15:00	21:00					
	15:30	21:30					
	16:00	22:00					

**local  
+ on-line  
for Asia,  
Africa  
Europe**

**on-line  
for North  
& South  
America**

You have to select 1 of the 2 options

### 1. Matlab-Simulink In-presence

P2-110, P2 building  
Univ. Lille

Classical for  
the summer school  
no particular needs!



### 2. Matlab-Simulink On-line Using ZOOM

2.1 with your own  
Matlab-Simulink  
No particular needs!

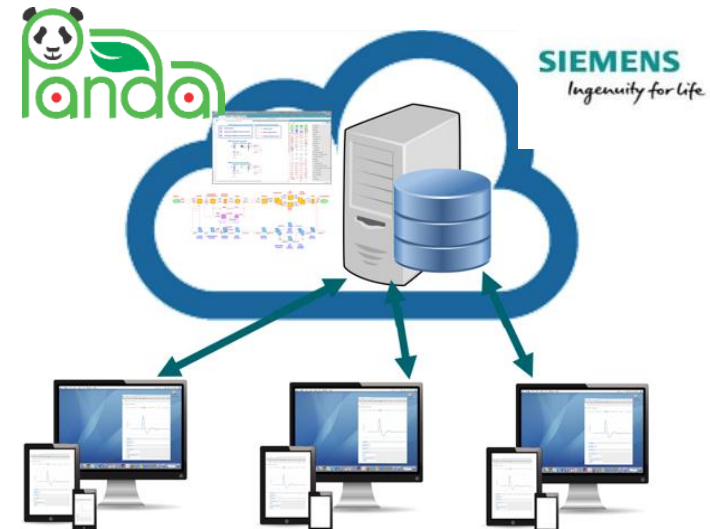
2.2. with the free  
30-day Matlab trial  
(see EMR21-Matlab  
On-line.pdf )

to register  
in advance!

### 3. AMESIM

On-line  
Using ZOOM

Cloud of PANDA  
(managed by SISW)  
No particular needs!



**Our simulation team (12 volunteers) will help you!**





Typhoon HIL

**Thanks to our valuable supports!**



GA 824256



**During EMR22:** EMR-cloud (guidelines, simulation files, presentations the day after)  
see your information e-mail

**After EMR22:**  
EMR web-site

All documents available  
next week at

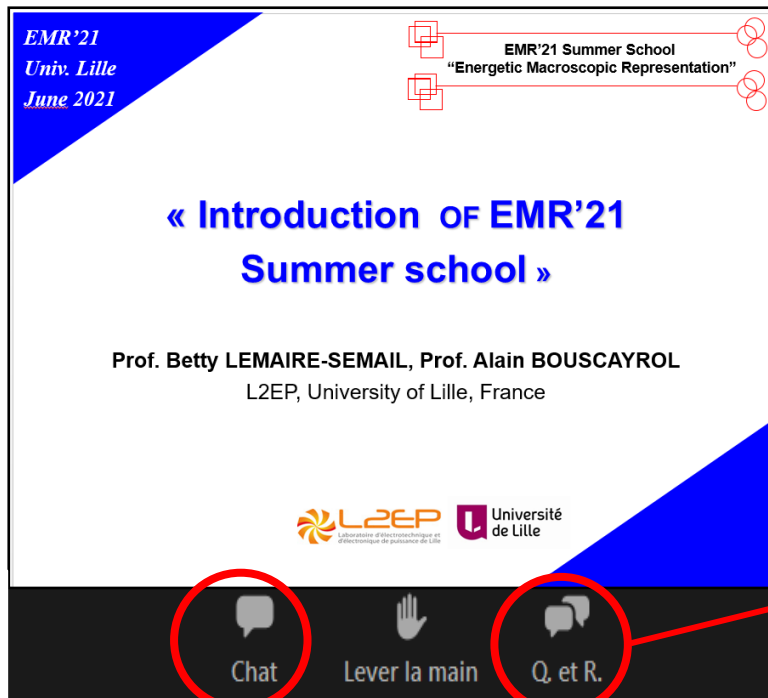
<https://emr-website.univ-lille.fr/>

**Webmasters:** Ryan O'BERRIEL

The screenshot shows the EMR Website interface in a Firefox browser window. The page title is "EMR Website" and the subtitle is "Energetic Macroscopic Representation". The URL is "www.emrwebsite.org/bases.html". The page content is organized into a sidebar and a main content area. The sidebar contains a navigation menu with items like "Home", "EMR Information", "Summer school EMR'13", "Past summer school", "Postgraduate courses", "EMR references", "EMR library", "EMR at SNCF company, 2013", "EMR Keynote VPPC13", "News", "Users List", and "Contact". The main content area is titled "Principles" and "EMR bases". It features a table of elements under the "Interaction principle" and a "Causality principle" section below it. The table lists various elements such as "source element (energy source)", "accumulation element (energy storage)", "mono-physical conversion element", "multi-physical conversion element", "amplification element", "mono-physical coupling element (energy distribution)", "multi-physical coupling element (energy distribution)", and "switching element". Each element is accompanied by a small diagram illustrating its function. The "Causality principle" section includes a note: "As in Causal Ordering Graph [Hautier 96], [Hautier 04], only the integral causality is considered in EMR. This".

**Any question: [Alain.Bouscayrol@univ-lille.fr](mailto:Alain.Bouscayrol@univ-lille.fr)**

Problem with ZOOM?  
Stop & Restart = 75% of solutions



### During lectures

- turn off microphone
  - open your mind!
- (increase of the flow quality)**

### For questions

- ask your question by Q&R
  - chairman gives you the floor
  - turn on your microphone
- give your name & affiliation  
and take the question
- (no question = no interest)**

CHAT: for general issues or info only  
(lack of sound, screen share, etc.)

